

vtech®

Instruction Manual

SWITCH&GO®
DINOS  **EGGS**

Pterodactyl



VTech understands that a child's needs and abilities change as they grow and with that in mind we develop our toys to teach and entertain at just the right level...

vtech Baby

Toys that will stimulate their interest in different textures, sounds and colours

I am...

...responding to colours, sounds and textures

...understanding cause and effect

...learning to touch, reach, grasp, sit-up, crawl and toddle

Birth-36 months



Pre-School

Interactive toys to develop their imagination and encourage language development

I want...

...to get ready for school by starting to learn the alphabet and counting

...my learning to be as fun, easy and exciting as can be

...to show my creativity with drawing and music so my whole brain develops

3-6 years



Electronic Learning Computers

Cool, aspirational and inspiring computers for curriculum related learning

I need...

...challenging activities that can keep pace with my growing mind

...intelligent technology that adapts to my level of learning

...National Curriculum based content to support what I'm learning at school

4-10 years

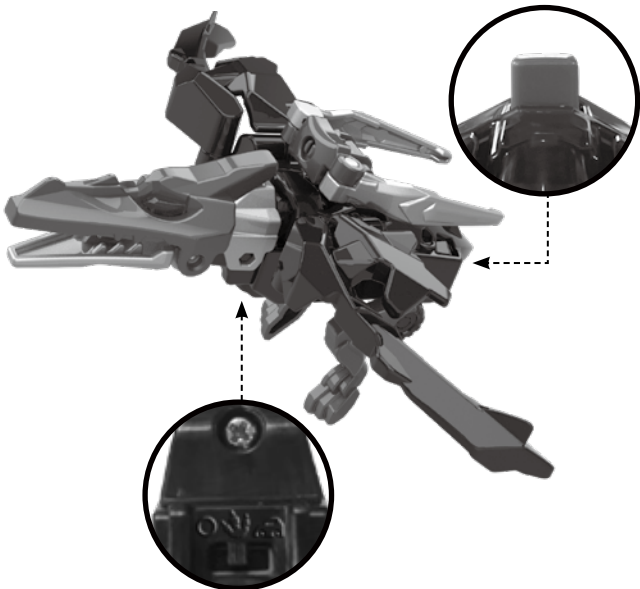


To learn more about this and other VTech® products, visit www.vtech.co.uk

INTRODUCTION

Assemble this powerful Pterodactyl, then switch it into a super cool helicopter and back again in just a few simple steps! Let's Switch & Soar!

Talk Button



Off / Dino Mode /
Vehicle Mode Switch

INCLUDED IN THE PACKAGE

- **Switch & Go Dinos® Eggs Pterodactyl**
- 15 Pieces for Assembly
- Quick Start Guide

WARNING:

All packing materials such as tape, plastic sheets, packaging locks, removable tags, cable ties, cords and packaging screws are not part of this toy and should be discarded for your child's safety.

NOTE:

Please save this Instruction Manual as it contains important information.

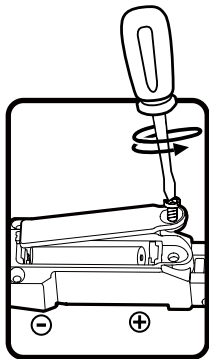
GETTING STARTED

Exit Try-Me Mode:

The product is in try-me mode in the packaging. To exit try-me mode, just slide the “Off/Dino Mode/Vehicle Mode” Switch from Vehicle mode to Dino mode/Off.

Battery Removal and Installation

1. Make sure the unit is turned **Off**.
2. Find the battery cover located on the bottom of the unit. Use a screwdriver to loosen the screw, and then open the battery cover.
3. Remove the old battery by pulling up on one end of the battery.
4. Install 1 new AAA (AM-4/LR03) battery following the diagram inside the battery box. (For best performance, alkaline batteries or fully charged Ni-MH rechargeable batteries are recommended).
5. Replace the battery cover and tighten the screw to secure.



WARNING:

Adult assembly required for battery installation.
Keep batteries out of reach of children.

IMPORTANT: BATTERY INFORMATION

- Insert batteries with the correct polarity (+ and -).
- Do not mix old and new batteries.
- Do not mix alkaline, standard (carbon-zinc) or rechargeable batteries.
- Only batteries of the same or equivalent type as recommended are to be used.
- Do not short-circuit the supply terminals.
- Remove batteries during long periods of non-use.
- Remove exhausted batteries from the toy.
- Dispose of batteries safely. Do not dispose of batteries in fire.

RECHARGEABLE BATTERIES:

- Remove rechargeable batteries from the toy before charging.
- Rechargeable batteries are only to be charged under adult supervision.
- Do not charge non-rechargeable batteries.

Disposal of batteries and product



The crossed-out wheellie bin symbols on products and batteries, or on their respective packaging, indicates they must not be disposed of in domestic waste as they contain substances that can be damaging to the environment and human health.



The chemical symbols Hg, Cd or Pb, where marked, indicate that the battery contains more than the specified value of mercury (Hg), cadmium (Cd) or lead (Pb) set out in the Batteries and Accumulators Regulation.

The solid bar indicates that the product was placed on the market after 13th August, 2005.

Help protect the environment by disposing of your product or batteries responsibly.

VTech® cares for the planet.

Care for the environment and give your toy a second life by disposing of it at a small electricals collection point so all its materials can be recycled.

In the UK:

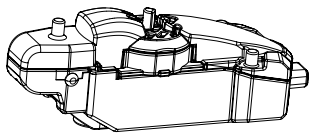
Visit www.recyclenow.com to see a list of collection points near you.

In Australia & New Zealand:

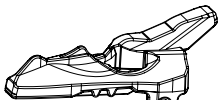
Check with your local council for kerbside collections.

ASSEMBLY INSTRUCTIONS

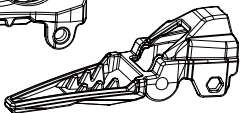
1. Identify the following pieces for assembly:



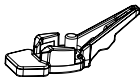
01



02



03



04



05



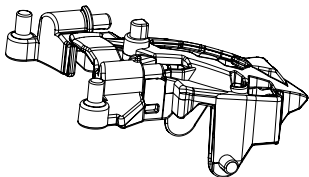
06



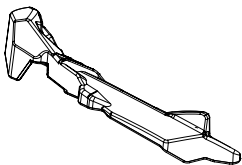
07



07



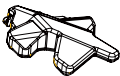
08



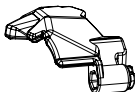
09



10



11



12

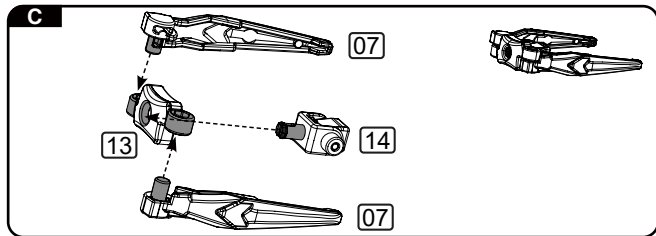
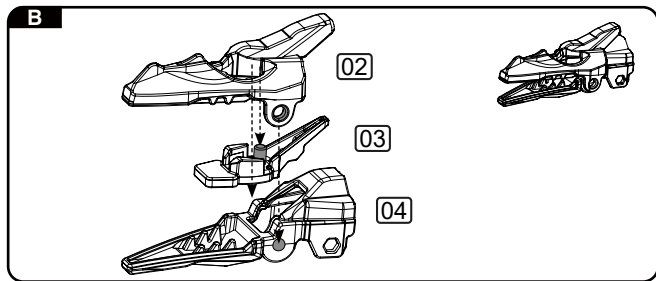
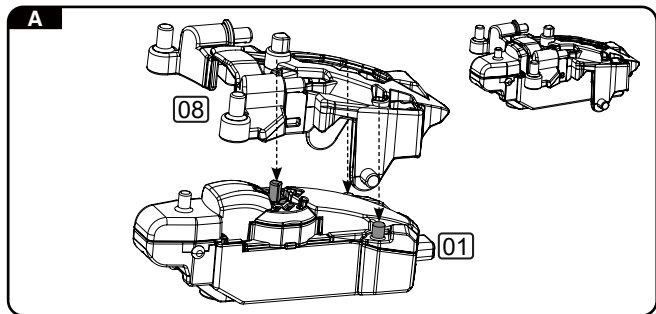


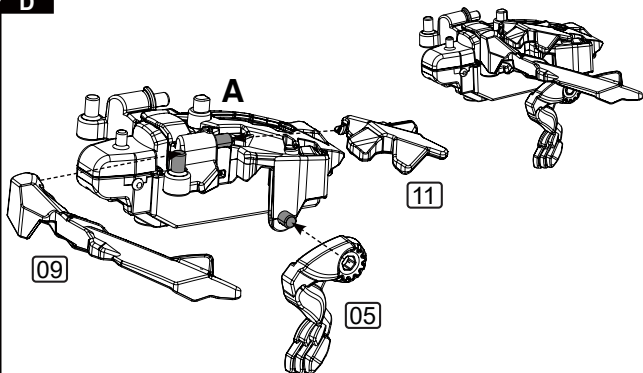
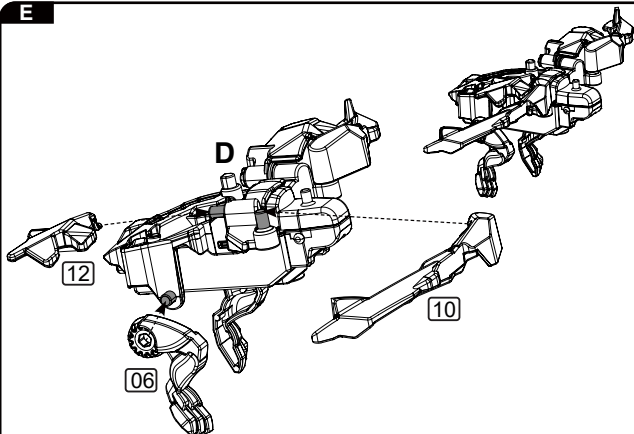
13

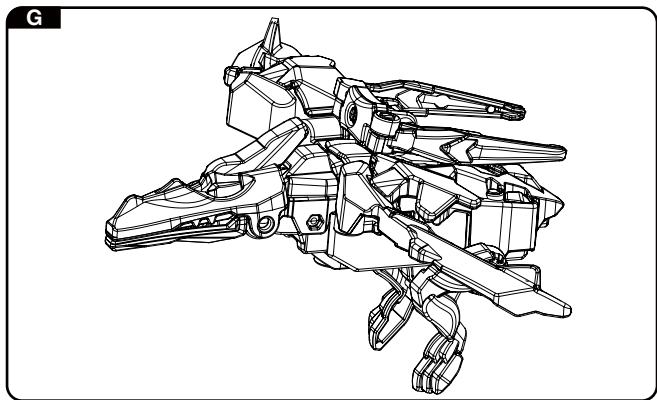
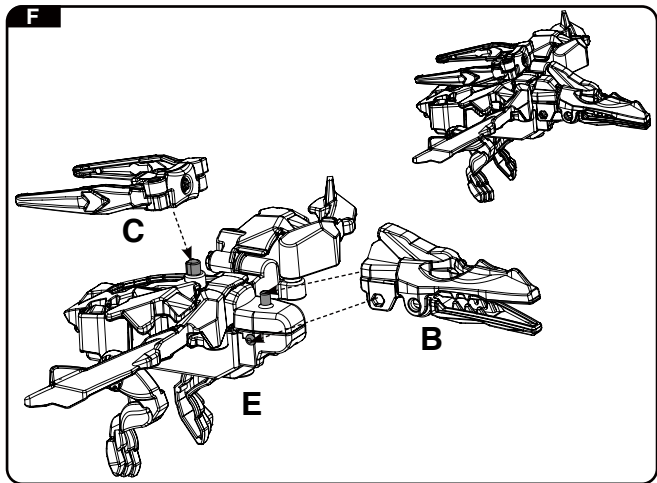


14

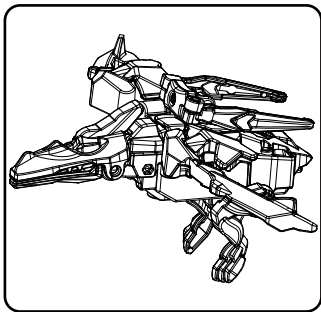
2. Separately install the A, B, C, D, E, F and G parts as shown in the illustrations.



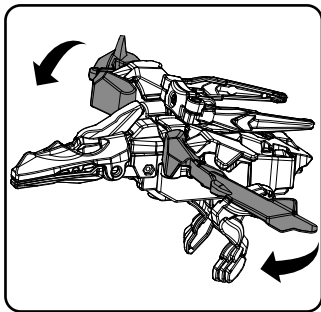
D**E**



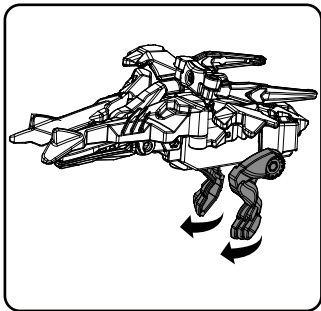
HOW TO SWITCH



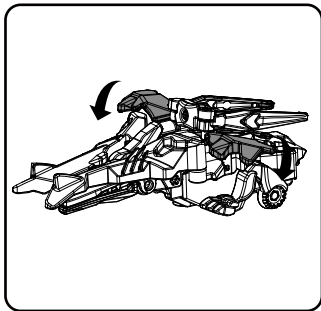
1. Dino mode.



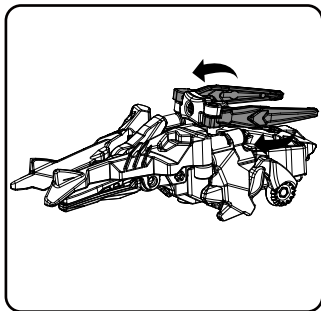
2. Flip the long section of wings forward towards the Dino's head.



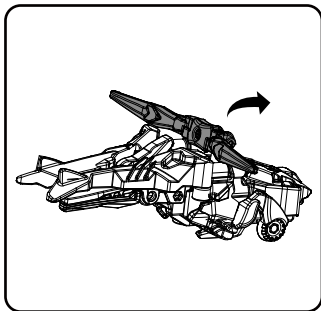
3. Flip the Dino's feet up towards the Dino's head.



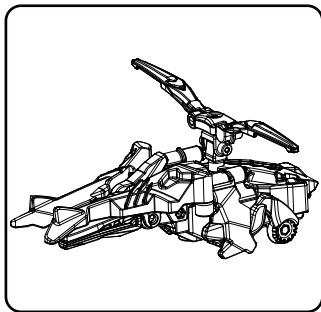
4. Fold the small section of wings down until they are close to the body.



5. Extend the rotor blades so that they form a straight line.



6. Flip the rotor 90 degrees so that it is parallel to the dino's body.

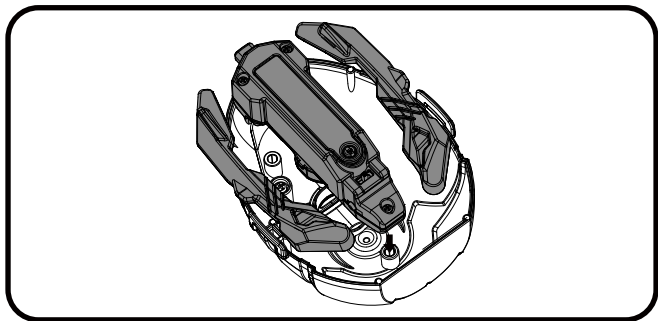


7. The Dino is now in Vehicle mode.
Flip the Off/Dino mode/Vehicle mode
Switch to play Vehicle responses.

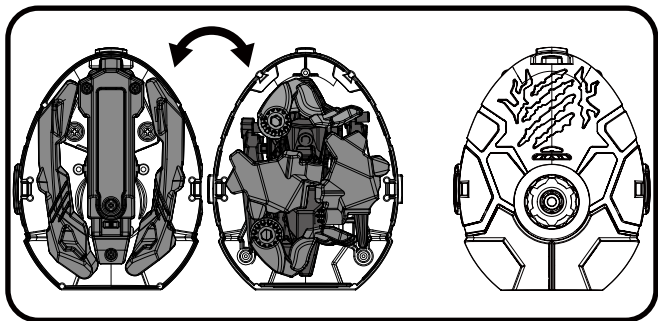
Note: To switch from Vehicle mode to Dino mode, follow the above steps in reverse order.

EGG SHELL DINO STORAGE

Pterodactyl can be dismantled and stored back inside the egg shell. Follow the below steps to store Pterodactyl:





Place the battery module and the 2 larger dino pieces into the egg shell as illustrated.

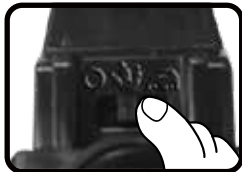


Put the remaining dino pieces into the other half of the egg shell. Then, connect the first half of the egg shell to seal.

PRODUCT FEATURES

1. OFF / DINO MODE / VEHICLE MODE SWITCH

Slide the **Off / Dino Mode / Vehicle Mode Switch** to turn the unit **ON** and choose Dino mode() or Vehicle mode() to play. Slide the Off / Dino Mode / Vehicle Mode Switch to the **Off** position to turn the unit **OFF**.



2. Talk Button

Press the **Talk Button** to hear fun phrases and cool dinosaur sounds in Dino mode, or hear fun phrases and great vehicle sounds in Vehicle mode.



3. AUTOMATIC SHUT-OFF

To preserve battery life, **Pterodactyl** will automatically turn off after a few seconds. **Pterodactyl** can be woken up again by pressing the Talk Button, or by switching between Dino and Vehicle modes.

NOTE: If the unit powers down or if the light flashes 3 times without sounds during play, please install a new set of batteries.

CARE & MAINTENANCE

1. Keep the unit clean by wiping it with a slightly damp cloth.
2. Keep the unit out of direct sunlight and away from any direct heat sources.
3. Remove the batteries if the unit will not be in use for an extended period of time.
4. Do not drop the unit on hard surfaces and do not expose the unit to moisture or water.

TROUBLESHOOTING

If for some reason the unit stops working or malfunctions, please follow these steps:

1. Turn the unit **Off**.
2. Interrupt the power supply by removing the batteries.
3. Let the unit stand for a few minutes, then replace the batteries.
4. Turn the unit **On**. The unit should now be ready to use again.
5. If the unit still does not work, install a new set of batteries.

If the problem persists, please contact our Consumer Services Department and a service representative will be happy to help you.

CONSUMER SERVICES

Creating and developing **VTech®** products is accompanied by a responsibility that we at **VTech®** take very seriously. We make every effort to ensure the accuracy of the information, which forms the value of our products. However, errors sometimes can occur. It is important for you to know that we stand behind our products and encourage you to call our Consumer Services Department with any problems and/or suggestions that you might have. A service representative will be happy to help you.

UK Customers:

Phone: 0330 678 0149 (from UK) or +44 330 678 0149 (outside UK)

Website: www.vtech.co.uk/support

Australian Customers:

Phone: 1800 862 155

Website: support.vtech.com.au

NZ Customers:

Phone: 0800 400 785

Website: support.vtech.com.au

PRODUCT WARRANTY/ CONSUMER GUARANTEES

UK Customers:

Read our complete warranty policy online at vtech.co.uk/warranty.

Australian Customers:

VTECH ELECTRONICS (AUSTRALIA) PTY LIMITED –
CONSUMER GUARANTEES

Under the Australian Consumer Law, a number of consumer guarantees apply to goods and services supplied by VTech Electronics (Australia) Pty Limited. Please refer to vtech.com.au/consumerguarantees for further information.

**Visit our website for more
information about our products,
downloads, resources and more.**

www.vtech.co.uk
www.vtech.com.au

